

**KEY**

- Cone
- Sign
- Work area
- ↑ Traffic light head
- ↑ Traffic light phase
- Diversion route

**DETAIL B**

Single/Dual carriageway 40mph or less - 450mm traffic cones, spacing 1.5m.  
 Single/Dual carriageway 50mph or more - 750mm traffic cones, spacing 1.5m.  
 Dual carriageway national speed limit - 750mm traffic cones, spacing 1.5m, relaxation 3m.

**Notes:**

- 1) During darkness, warning lights to BS EN 12352:2006 should be provided in accordance with Table A1.3 (Appendix 1).
- 2) 45 degree tapers have 1.5m spacing and no relaxations.
- 3) On motorways and NSL AP duals with hard shoulders, 1m cones will be required for both standard and relaxation works for lead tapers and the facing wall of lane changes.

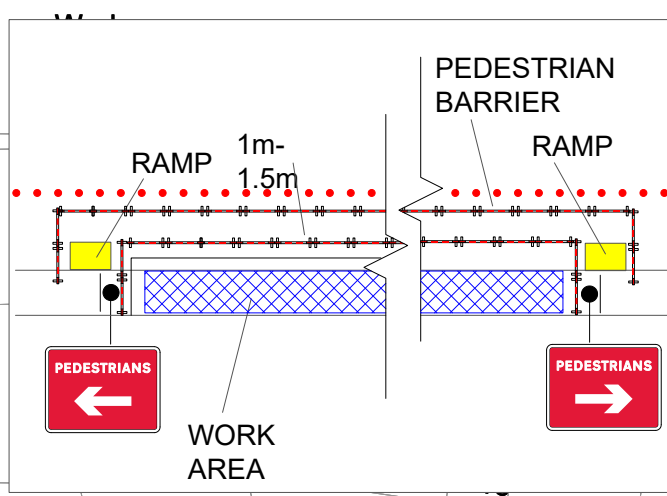
**DETAIL C2**

Single carriageway 40mph or less - 450mm traffic cones.  
 Single/Dual carriageway 50mph or more - 750mm traffic cones.

**Notes:**

- 1) During darkness, warning lights to BS EN 12352:2006 should be provided in accordance with Table A1.3.

**PEDESTRIAN WALKWAY DETAIL**



**Traffic Light Phase Timings**

Phase 1: Spon Lane South, (S)	Red	10s	↓
	Green	40s	
Phase 2: Spon Lane South, (N)	Red	10s	↑
	Green	40s	

Note: Timings may only be adjusted by a competent operative to suit traffic conditions if required

**NOTE**  
 Side Approach Signage To Be Risk Assessed On Site

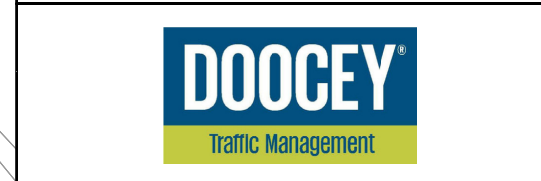
**NOTE**  
 3.00m running lane to be maintained at all times.

Min width of sideways safety zone (S)	0.5 m			
Min length of longways clearance (L)	0.5 m			
Speed of the road	<b>30</b>			
Rev	Description	By	Chk	Date
Revisions				



Project:  
 George Street,  
 West Bromwich, B70 6AA  
 Grid Ref: (x)400741 ; (y)290699

Title:  
 Two Way Traffic Lights +  
 Road Closure & Diversion



Design: SH	Drawn: SH	Chkd: OP
Date: 24/06/26	Date: 24/06/26	Date: 24/06/26
Scale: A3 - NTS	Status: Proposed	
Drawing No	DTM9650 - 001	
	Rev:	-