
Fire Risk Assessment

**Falcon Place,
13-18,
Tividale,
Oldbury,
B69 1PB.**



Date Completed: 01/05/2026

Review Period: 3 years.

Officer: C. Hudson Fire Risk Assessor

Checked by: J Blewitt Team Lead Fire Safety

Current Risk Rating = Tolerable

Subsequent reviews

<u>Review date</u>	<u>Officer</u>	<u>Comments</u>

Contents

Section 0	Introduction	
Section 1	Significant Findings (executive summary)	
Section 2	People at Significant Risk of Fire	
Section 3	Contact Details	
Section 4	Description of Premises	
Section 5	Building Plan	
Section 6	External Envelope	
Section 7	Means of Escape from Fire	
Section 8	Fire Detection and Alarm Systems	
Section 9	Emergency Lighting	
Section 10	Compartmentation	
Section 11	Fire Fighting Equipment	
Section 12	Fire Signage	
Section 13	Employee Training	
Section 14	Sources of Ignition	
Section 15	Waste Control	
Section 16	Control and Supervision of Contractors and Visitors	
Section 17	Arson Prevention	
Section 18	Storage Arrangements	
Section 19	Additional Control Measures. Fire Risk Assessment – Action Plan	
Appendix 1	Significant Hazards on Site and Information to be provided for the Fire Service	

Section

0

Introduction

The [Regulatory Reform \(Fire Safety\) Order 2005 \(RR\(FS\)O\)](#) places a legal duty on landlords to complete a fire risk assessment (FRA). Specifically, RR(FS)O article 9. — (1) *“The responsible person must make a suitable and sufficient assessment of the risks to which relevant persons are exposed for the purpose of identifying the general fire precautions he needs to take to comply with the requirements and prohibitions imposed on him by or under this Order”*.

This type 1 fire risk assessment has been written to comply fully with the above legislation which is enforced locally by West Midlands Fire Service. If required, complaints can be made to them by telephone on 0121 380 7500 or electronically on <https://www.wmfs.net/our-services/fire-safety/#reportfiresafety>. In the first instance however, we would be grateful if you could contact us directly via https://www.sandwell.gov.uk/info/200195/contact_the_council/283/feedback_and_complaints or by phone on 0121 569 6000.

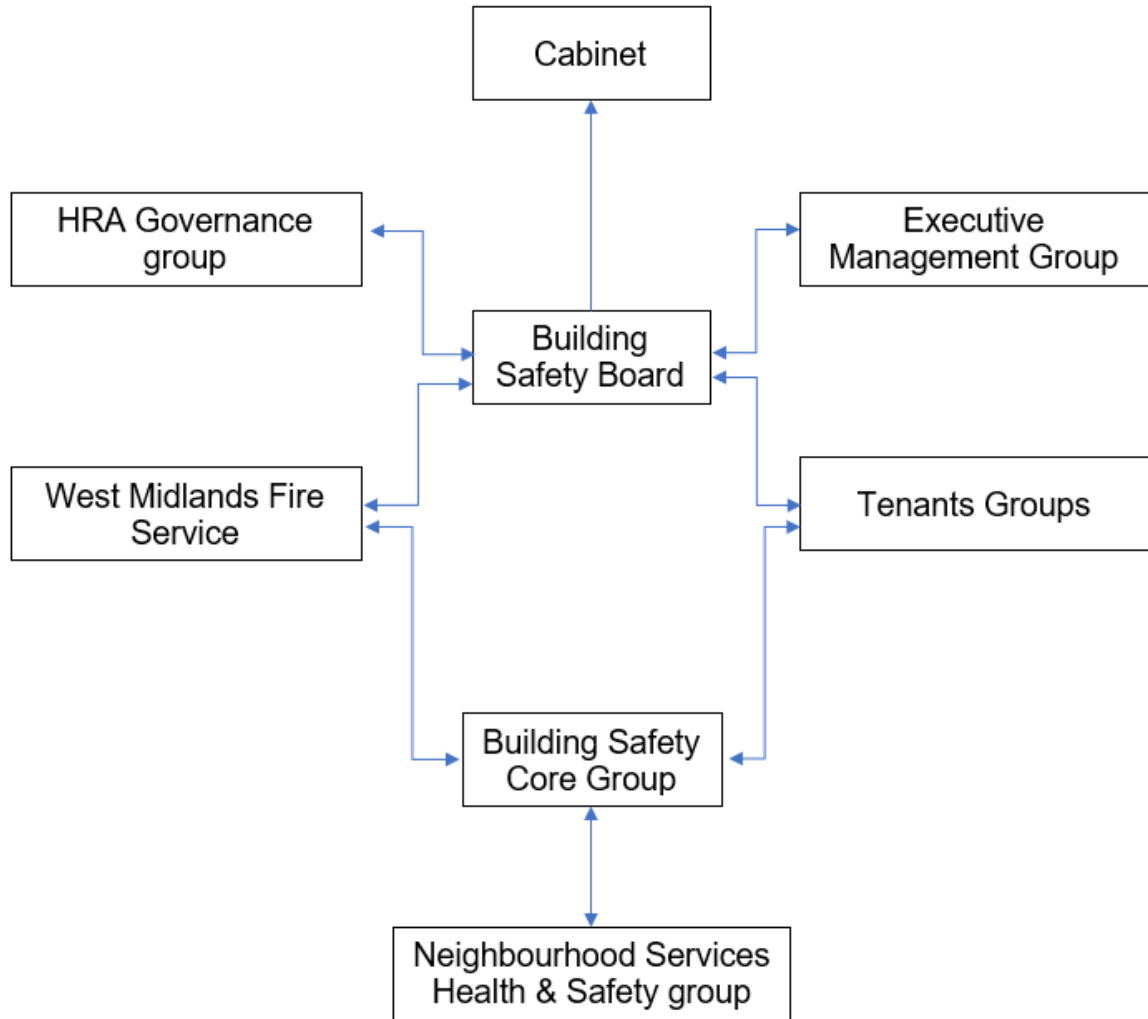
The date of the fire risk assessment is on the front page, followed by any subsequent reviews. A recurring time frame is not set in legislation. The council has procedures and policies in place that will trigger a review of the fire risk assessment. This then is recorded on the fire risk assessment. If the review suggests the fire risk assessment is not currently suitable and sufficient, then a new fire risk assessment will be undertaken and become the current fire risk assessment. The previous fire risk assessment will be retained in the building safety case for that building.

The following diagrams illustrate those procedures and persons that support the effective planning, organisation, control, monitoring and review of the preventive and protective measures. This information is provided as required under the RR(FS)O.



The above processes and procedures are overseen by the Fire Safety, Facilities and Premises Manager who reports to the Business Manager - Surveying and Fire Safety.

These managers attend the Fire Safety Core Group for scrutiny which is part of the governance structure below.



To summarise the fire risk assessment, in this scenario the RR(FS)O requires the prescribed information to be recorded. The prescribed information is the significant findings of the fire risk assessment and those groups or persons especially at risk from fire.

This is recorded here in [section 1](#). Also required to be recorded under article 11, are the fire safety arrangements for the planning, organisation, control, monitoring and review of the preventative and protective measures. The information shown above is part of this requirement.

Section

1

Significant findings

The significant findings (executive summary) of the fire risk assessment include those measures that have been or will be undertaken by the responsible person in order to comply with the RR(FS)O 2005.

Groups of people especially at risk of fire include such people as remote or lone workers, at risk due to layout of the building, visitors and contractors unfamiliar with the building layout as well as those with physical, sensory or mental health issues.

A third requirement that under the order must be recorded is the fire safety arrangements. This is the effective planning, organisation, control, monitoring and review of the preventive and protective measures. These are shown in the introduction.

Significant findings

Include a summary of protective and preventative measures where relevant along with any issues found.

The escape strategy is '**Stay Put Unless**'. This means in the event of a fire in your flat you should evacuate. If there is a fire elsewhere in the building you should stay put unless you are affected by fire or smoke or you have been advised by the emergency services to leave.

Section number	Section Area	Individual Risk Level
Section 6	<p>External Envelope The building is of predominately traditional brick construction with a pitched roof, and concrete interlocking tiles roof.</p> <p>UPVC double glazed units are fitted to individual flats.</p> <p>communal windows are Georgian wired double glazed unit in UPVC frames.</p> <p>The Final exit doors are of timber construction with glass vision panels.</p>	<p>Trivial</p>
Section 7	<p>Means of Escape from Fire The premise has a single staircase and three final exit door that provide a sufficient means of escape.</p> <p>All flats have FD 30s composite doors apart from flat 10 which has a notional timber door.</p>	<p>Trivial</p>
Section 8	<p>Fire Detection and Alarm Systems Early warning is limited to hard wired or battery smoke alarms within each of the resident's flats.</p> <p>The detection in flats should be to a minimum LD3 standard.</p>	<p>Trivial</p>
Section 9	<p>Emergency Lighting The premises have a sufficient emergency lighting system in accordance with BS 5266 and have test points strategically located throughout the block.</p>	<p>Tolerable</p>

<p>Section 10</p>	<p>Compartmentation The premise has sufficient compartmentation to limit the travel and effect of smoke and flame in event of a fire between dwellings and support the stay put unless policy.</p> <p>Roof void is assessable from communal area on the third floor.</p>	<p>Trivial</p>
<p>Section 11</p>	<p>Fire Fighting Equipment No firefighting provisions are provided within the premise.</p>	<p>Trivial</p>
<p>Section 12</p>	<p>Fire Signage Appropriate signage is in place.</p>	<p>Trivial</p>
<p>Section 13</p>	<p>Employee Training All staff receive basic fire safety awareness training.</p>	<p>Trivial</p>
<p>Section 14</p>	<p>Sources of Ignition The fixed electrical installation was last tested on 07/01/26 and should be tested every five years. The EICR was recorded as satisfactory.</p>	<p>Trivial</p>
<p>Section 15</p>	<p>Regular cleaning service at the block and regular checks from caretakers help with the waste control at the block.</p> <p>The block has a refuse chute that leads to a bin room store on the ground floor near the side entrance.</p>	<p>Trivial</p>

Section 16	Control and Supervision of Contractors and Visitors Contractors are controlled centrally, and hot works permits are required where necessary.	Trivial
Section 17	Arson Prevention The final exit doors have door entry systems installed. These doors have a fob reader to enter the building and a push button to exit the building. There is no evidence of any arson since the last risk assessment was carried out.	Trivial
Section 18	Storage Arrangements No storage space within the communal areas and Residents instructed not to bring L.P.G cylinders into block. Residents have access to external storage cupboards.	Trivial

Risk Level Indicator

The following simple risk level estimator is based on commonly used risk level estimator:

Likelihood of fire	Potential consequences of fire		
	Slight harm	Moderate harm	Extreme harm
Low	Trivial risk	Tolerable risk	Moderate risk
Medium	Tolerable risk	Moderate risk	Substantial risk
High	Moderate risk	Substantial risk	Intolerable risk

Considering the fire prevention measures observed at the time of this risk assessment, it is considered that the hazard from fire (likelihood of fire) at these premises is:

Low Medium High

In this context, a definition of the above terms is as follows:

Low Unusually low likelihood of fire because of negligible potential sources of ignition.

Medium Normal fire hazards (e.g. potential ignition sources) for this type of occupancy, with fire hazards generally subject to appropriate controls (other than minor shortcomings).

High Lack of adequate controls applied to one or more significant fire hazards, such as to result in significant increase in likelihood of fire.

Considering the nature of the premises and the occupants, as well as the fire protection and procedural arrangements observed at the time of this fire risk assessment, it is considered that the consequences for life safety in the event of fire would be:

Slight Harm Moderate Harm Extreme Harm

In this context, a definition of the above terms is as follows:

Slight harm Outbreak of fire unlikely to result in serious injury or death of any occupant (other than an occupant sleeping in a room in which a fire occurs).

Moderate harm Outbreak of fire could foreseeably result in injury including serious injury) of one or more occupants, but it is unlikely to involve multiple fatalities.

Extreme harm Significant potential for serious injury or death of one or more occupants.

Accordingly, it is considered that the risk to life from fire at these premises is:

Trivial Tolerable Moderate Substantial Intolerable

Comments

After conducting a Type 1 fire risk assessment at Falcon Place 13-18

I conclude, the likelihood of a fire is at a medium level of risk prior to the implementation of the action plan because of the normal fire hazards that have been highlighted within the risk assessment.

Considering the use of the premises and the occupants within the block, the potential consequences for life safety in the event of a fire would be slight harm. This is because nearly all flats are fitted with composite FD30S entrance doors and a notional timber fire door, smoke detection systems installed to a minimum of LD3 in all flats, the final exit door have a door entry system, and a stay-put unless fire strategy is in place.

Once the recommended actions have been completed, the overall risk rating for the building will be reduced to trivial, subject to the implementation of the suggested measures outlined in this fire risk assessment.

Overall, the risk level at the time of this FRA is considered tolerable.

When future refurbishments are carried out, there are a number of observations that would improve the building. These observations can be found at the end of this document.

A suitable risk-based control plan (where applicable) should involve effort and urgency that is proportional to risk. The following risk-based control plan is based on one that has been advocated for general health and safety risks:

(Note that, although the purpose of this section is to place the fire risk in context, the above approach to fire risk assessment is subjective and for guidance only. All hazards and deficiencies identified in this report should be addressed by implementing all recommendations contained in the following action plan. The fire risk assessment should be reviewed regularly.)

Risk level	Action and timescale
Trivial	No action is required, and no detailed records need to be kept.
Tolerable	No major additional fire precautions are required. However, there might be a need for reasonably practicable improvements that involve minor or limited cost.
Moderate	It is essential that efforts are made to reduce the risk. Risk reduction measures, which should take cost into account, should be implemented within a defined time period. Where moderate risk is associated with consequences that constitute extreme harm, further assessment might be required to establish more precisely the likelihood of harm as a basis for determining the priority for improved control measures.
Substantial	Considerable resources might have to be allocated to reduce the risk. If the premises are unoccupied, it should not be occupied until the risk has been reduced. If the premises are occupied, urgent action should be taken.
Intolerable	Premises (or relevant area) should not be occupied until the risk is reduced.

Section

2

People at Significant Risk of Fire

Persons at significant risk of fire does not just refer to those people with physical, sensory or mental health issues. It also includes those at risk due to the layout or features of the building such as inner rooms or dead-end conditions. Persons may also be at risk due to remote or lone working.

The RR(FS)O requires that these people are identified in any fire risk assessment.

Sandwell Council has a policy and procedure in place for Personal Emergency Evacuation Plans (PEEPs). This is based on tenants identifying themselves as requiring a PEEP. This will be reliant on the outcomes of the government consultation which is yet to be published.

Residents are responsible for letting us know whether they might need a Personal Emergency Evacuation Plan (PEEP). The Resident Engagement Officers (Fire Safety) will conduct an assessment visit upon request. Any risk-reduction measures that are found where a PEEP is necessary and completed will be documented and taken quickly.

With the consent of the resident, we will make a referral for West Midlands Fire Service to conduct a Safe and Well visit.

When a PEEP is in place, the relevant information will be kept in the secure Premise Information Box (High Rise Buildings only), which is set up to help WMFS in an emergency. The data is classified as level 1, which means it complies with the General Data Protection Regulations.

Section 3

Contact Details

The Chief Executive of Sandwell Metropolitan Borough Council has ultimate responsibility for the site as the responsible person identified by the RR(FS)O 2005.

The Chief Executive has put a structure in place to support the management of the site.

This includes the role of Building Safety Manager who has duties as defined within the Regulatory Reform (Fire Safety) Order 2005.

The contact names to support the management of the site are as follows:

Chief Executive Shokat Lal		
Executive Director Asset Manager & Improvement Alan Lunt		
Assistant Director Asset Manager & Improvement Sarah Agar		
Fire Safety Manager Tony Thompson		
Team Lead Fire Safety Jason Blewitt		
Team Lead Building Safety Anthony Smith		
Housing Office Manager Prabha Patel		
Building Safety Managers Adrian Jones Andrew Froggatt Carl Hill Louis Conway	Fire Risk Assessors Craig Hudson Mohammed Zafeer Stuart Henley	Resident Engagement Officers – Fire Safety Abdulmonim Khan Ethan Somaiya Hannah Russon

Please note, the above details are correct at the time of the production of the risk assessment and may be subject to change.

**Section
4**

Description of Premises

This type 1 fire risk assessment covers

Falcon Place 13-18
Tividale,
Oldbury
B69 1PD

The communal, any workplace areas and the external envelope of the building are subject to the Regulatory Reform (Fire Safety) Order 2005 as confirmed by the Fire Safety Act 2021. The enforcing authority is West Midlands Fire Service.

Description of the Property:

The Low-rise block was constructed in 1965 of traditional brick cavity and concrete construction with brick walls concrete floors and stairs and consist of 3 storeys (inclusive of the ground floor). Each of the floors contains 2 number dwellings.

The block has double glazed UPVC window frames with a pitched, tiled roof.

The block consists of 3 stories inclusive of ground.



Each of the floors from the ground floor upwards contain 2 individual flats.

The main entrance is on the front elevation with a further exit located on the rear elevation, a door entry system using a fob reader is installed. The escape routes lead to an ultimate place of safety. The front final exit door has a firefighter override switch operated by drop-latch key. The door entry system is designed to fail safe and unlock in the event of a power failure.



The bin store is located on the ground floor near the front entrance. The bin store is not secured with any type of lock. There is a latch present to keep the bin store door closed.



The bin chute has a manual closing plate



Internal access to the loft space can be gained on the third floor communal area. Residents do not have access to the roof space.



The block has a single concrete staircase as the sole means of escape (above ground floor).



The concrete stairs do not have any carpet covering.



Flats 13,14 are on the ground floor.

Flats 15,16 are on the 1st floor.

Flats 7,8,9 are on the 2nd floor.

Storage cupboards located externally. These are kept secure and tenants have the keys; no access was gained to the storage cupboards whilst carrying out this FRA.



The service cupboard housing electrical intakes is situated at the front of the building behind the staircase; the door is a notional FD60 door, secured with a type 138 suited mortice lock. Residents have been provided with a key for access to their electricity meters.



The gas supply to the block is supplied externally.



The building has been designed and constructed to provide reasonable facilities to assist fire fighters in the protection of life. Reasonable provisions have been made to enable fire appliances to gain access to the building.

The communal, any workplace areas and the external envelope of the building are subject to the Regulatory Reform (Fire Safety) Order 2005 as confirmed by the Fire Safety Act 2021.

The enforcing authority is West Midlands Fire Service.
The nearest fire station is Haden Cross Community Fire Station.

High/Low Rise	Low-Rise
Number of Floors	3
Date of Construction	1965
Construction Type	Traditional Brick Cavity / Concrete
Last Refurbished	Unknown
External Cladding	None

Fire Risk Assessment

Number of Lifts	None
Number of Staircases	1
Automatic Smoke Ventilation to communal area	None
Fire Alarm System	None
Refuse Chute	Yes
Access to Roof	Yes, Access from 2 nd floor communal area
Equipment on roof (e.g. mobile phone station etc)	None

Persons at Risk

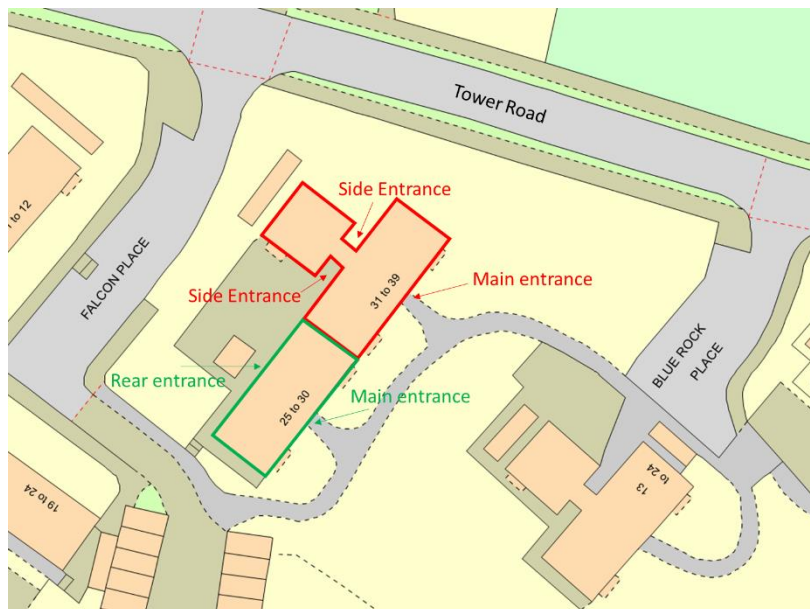
Residents / Occupants of 6 flats in total,
Visitors,
Sandwell MBC employees,
Contractors,
Service providers (e.g. meter readers, delivery people etc)
Statutory bodies (e.g. W.M.F.S, Police, and Ambulance)

**Section
5**

Building Plan

Plan to show the general location/orientation of the building.

Falcon Place 13-18.



Section 6

External envelope

Following the introduction of the Fire Safety Act 2021, consideration needs to be given to the external envelope of the building for any fire risk. This predominantly means the external wall construction including any insulation filler. It also includes balconies and any other fixtures as well as doors and windows.

Below is a breakdown of the materials used within the external envelope.

It is deemed that the combination and application of these materials present an acceptable level of fire risk.

- 1) The external envelope of the building is predominantly traditional brick construction.



- 2) The block has a pitched roof which is clad with concrete interlocking tiles.
- 3) All flats have a UPVC windows fitted with double glazed units.



- 4) Access is gained to all flats from the ground floor using the main access door leading to the staircase area, further egress is available via the rear access door. All doors are solid timber with glass vision panels and have a Fob access system and a self-closer attached.



- 5) The main entrance has a firefighter override switch to allow access.



- 6) The building has UPVC fascias and under cloaking with UPVC guttering just below the roof line.



7) UPVC double glazed units have been installed to each flat.



8) In the building the 1st and 2nd floor landings, have UPVC frames with Georgian wired glass, these windows can be opened without the use of a key, these also allow sufficient ventilation. There is no automatic smoke ventilation system installed in this premises.



9) Gas risers enter the building on the external elevations.



10) The bin store located on the ground floor is located next to the main entry, exit. The bin store has a manual closure plate, and the door is not secured with any type of lock. There is a latch present to keep the bin store door closed.



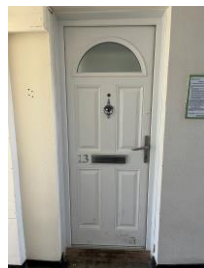
**Section
7**

Means of Escape from Fire

- 1) All Individual flat doors are FD30s rated composite fire doors, with flat No 17 being a notional timber door.



- 2) Access was attempted to a sample some of the properties as part of the risk assessment. This was to ensure the doors have not been tampered with by residents.



- 3) Access was gained to Flat 13 to check the door and it reliably self closes on the latch.



- 4) Access was gained to Flat 14 to check the door and it reliably self closes on the latch.



- 5) It is noted some of the flat entrance doors have door mats the fire rating of these is unknown but are deemed low risk.



- 6) The block has a single staircase that provides a means of escape and is 976mm in width.



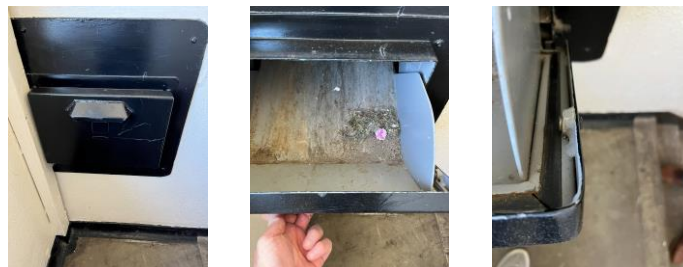
- 7) The landing is kept clear to maintain safe means of escape.



- 8) None of the corridors that form part of the means of escape are dead ends.
- 9) The building has sufficient passive controls that provide effective compartmentation to support a Stay Put Policy. Therefore, residents are advised to remain in their flat unless the fire directly affects them.
- 10) The communal area is kept free of flammable items. The communal areas should be checked on a regular basis by Caretaking / Cleaning teams and all items of rubbish removed.
- 11) Ventilation of the common area is facilitated by openable windows in the stairwell; these do not require a key to open. There is no automatic smoke ventilation system installed in this premises.



- 12) It was noted that some of the windows in the communal area have damage to them and do not close properly in to the frame, so an email has been sent to repairs on the 19/05/2026
- 13) Refuse chute located within the communal landing areas on 1st and 2nd floor.



- 14) Emergency lighting is provided to communal landing and stairs. Checks are done monthly by Sandwell MBC in house electrical team or approved contractor.



- 15) The front final exit door has a door entry system installed. These systems are designed to fail safe i.e., door unlocked in the event of a power failure. This prevents residents being locked in or out of the building.



- 16) The only communal doors within the block are the final exit doors. The main front door is fitted with an automatic closing device that is checked on a regular basis by Caretaking Teams as part of their daily checks. Defective closing devices are reported to an external contractor.



- 17) The rear final exit door had a fault and was not locking an email was sent for the CCTV team to attend and rectify the fault on the.

Section
8

Fire Detection and Alarm Systems

- 1) Early warning is limited to hard wire or battery smoke alarms within each of the resident's flats the equipment is subjected to a cyclical test.
- 2) Based on samples taken, the previous fire risk assessment and information kept on file (JM) the smoke alarms within resident's flats are installed to a minimum of an LD3 Standard.

Flat 13 was accessed and was seen to be LD1 standard.

Flat 14 was accessed and was seen to be LD3 standard.



For information

LD1 all rooms except wet rooms

LD2 all-risk rooms e.g. Living Room, Kitchens and Hallway.

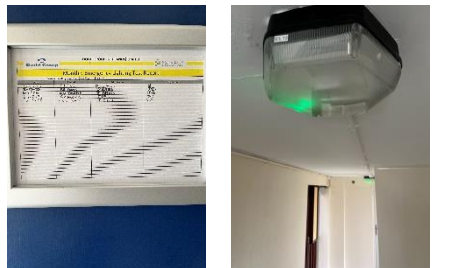
LD3 Hallway only

- 3) There is no effective means for detecting an outbreak of fire to communal areas. The reason for this is:
 - I. Such systems may get vandalised.
 - II. False alarms would occur.
 - III. A Stay Put - Unless policy is in place.

Section 9

Emergency Lighting

- 1) The premises has a sufficient emergency / escape lighting system in accordance with BS 5266 and has test points strategically located.
- 2) The self-contained units are provided to the communal landings, stairs.
- 3) All installed equipment is checked and tested monthly by Sandwell MBC in house electrical team or approved contractor, in accordance with current standards. The emergency lighting was subject to an in-house test on 10/03/2026.
- 4) **The emergency light outside no7 on the second-floor landing was not working this requires repair. See Action 9/4.**



cityfire. CF009 - SMBC - Emergency Lighting Test
& Electrical Services Ltd Certificate - Self-Contained Fittings

Job Details

Job ID 193171	Client Name Dodd Group (Midlands) Limited	Site Name 1-12 FALCON PLACE
Job Order Number SMBC_19396772	Details Of Client Dodd Group Ltd Stafford Park 13	Site Address
Client ID 25	Client Postcode TF3 3AZ	Site Post Code
Site ID 8.580		

System Details

Manufacturer Kostlic	Number of Fittings Onsite 14
-------------------------	---------------------------------

Inspections and Tests

Type of Inspection ANNUAL	Any luminaires having a repair has been internally cleaned NO	Are all luminaires labelled YES
All luminaires and/or signs are functioning correctly PASS	A visual check of the fixed wiring installation has been carried out YES	Log book completed YES
Each luminaire has been checked to ensure that the normal supply has been restored YES	Has any alteration to the building structure or layout affected the effectiveness of the emergency lighting system NO	Comments
All luminaires have been externally visually examined YES		

Sign Off Area

NAME OF ENGINEER jannie davis	New Signature 	New Date 10/03/2026
----------------------------------	-------------------	------------------------

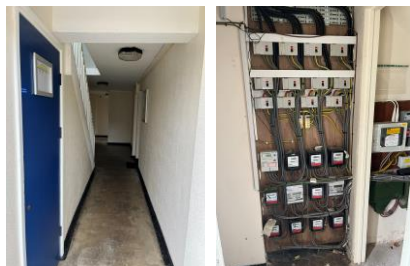
Photos

Photo Attachments	Photo Attachments	Photo Attachments
Photo Attachments	Photo Attachments	Photo Attachments

Section 10

Compartmentation

- 1) The building is designed to provide as a minimum 1-hour vertical fire resistance and 1-hour horizontal fire resistance around flats. All flat entrance doors are 30-minute fire doors, including those in 1-hour rated walls.
- 2) The building has sufficient passive controls that provide effective compartmentation to support a Stay Put-Unless policy. Therefore, residents are advised to remain in their flat unless the fire directly affects them or if they are advised to evacuate by the emergency services.
- 3) The premise has sufficient compartmentation to limit the travel and effect of smoke and flame in event of a fire. Whilst the existing fire stopping is fit for purpose, there is a cyclical programme to ensure fire stopping as not been compromised by third parties and where applicable enhance the fire stopping.
- 4) A variety of methods / materials have been used to achieve fire-stopping.
- 5) Any remedial works arising from the fire stopping / compartmentation check(s) will be actioned immediately by the Fire Safety Rapid Response Team.
- 6) The service cupboard housing electrical intakes is situated at the front of the building behind the staircase, this is a notional FD60 door, secured with a type 138 suited mortice lock. Residents have been provided with a key for access to their electricity meters.



- 7) All Flats have a composite FD30s rated fire doors except flat 17 which has a notional timber door with Georgian wired glass fitted, that protects the means of escape.



- 8) The block has a pitched roof with loft access panel on the third-floor landing area.



- 9) The loft hatch is of timber construction, recommend replacement to a fire rated loft hatch in future upgrade programme see observations.
- 10) The loft area was inspected visually from the head of a ladder. The solid block wall with a fire door fitted in it appeared to be in good condition, but this assessment was limited and does not constitute a comprehensive compartmentation survey.



Section

11

Fire Fighting Equipment

- 1) There is no firefighting equipment on this premises.

**Section
12**

Fire Signage

- 1) Appropriate signage is displayed throughout the building.
- 2) No smoking (Smoke Free England) signage is displayed at the front entrance to the premises.



- 3) Directional fire signage is not displayed throughout the building.
This is due to the simple layout of the building, and this type of signage is not required.
 - 4) Yellow LPG warning signs are not displayed within the block.
[refer to section 18.](#)
-

**Section
13**

Employee & Resident Training/Provision of Information

- 1) All Caretaking / Cleaning Employees have undertaken fire safety training. This includes use of bespoke 'Fire Safety in High / Low Rise Flatted Accommodation' Video.
 - 2) All employees are encouraged to complete 'In the line of fire' training on an annual basis.
 - 3) Caretaking teams are not currently trained in the effective use of fire extinguishers.
 - 4) Fire safety information has been provided as part of tenancy pack. Information regarding the Stay Put Unless fire evacuation strategy is provided to tenants.
 - 5) Staff undertaking fire risk assessments are qualified to Level 4 Diploma in Fire Risk Assessment.
-

**Section
14**

Sources of Ignition

- 1) Smoking is prohibited on entrance and within any communal parts of the building in line with Smoke Free England legislation.
- 2) Hot working is not normally carried out. If essential maintenance requires the use of hot work processes, then corporate policies and procedures are to be followed.
- 3) Portable electrical equipment used as part of the Caretaking / Cleaning regime is subject to annual PAT Testing. This information is held by the Estate Services Manager.
- 4) The fixed electrical installation EICR inspection was last carried out 07/01/2026 and is carried out every 5 years. This was satisfactory.

This certificate is not valid if the serial number has been copied or altered. 40823878 EICR18.3C

ELECTRICAL INSTALLATION CONDITION REPORT
Issued in accordance with BS 7671:2018 (as amended) - Requirements for Electrical Installations

PART 1 : DETAILS OF THE CONTRACTOR, CLIENT AND INSTALLATION

DETAILS OF THE CONTRACTOR Registration No: 004796508 Trading Name: Dodd Group (Midlands) Ltd Address: Unit 3 Redstone Park, Redstone Lane, Stonehamkirk Telephone: 0121 565 0060	DETAILS OF THE CLIENT Company Name: N/A Name: SNEC Electrical Address: Sandwell Homes, Education & Development Centre, Street 2 Industrial Park, Oldbury, West Midlands Telephone: 0121 359 3100	DETAILS OF THE INSTALLATION Location: Communal Area URN: E117420F401 Address: 1 - 12 Falcon Place, Twickenham, Croydon, West Midlands Postcode: B60 1PD
---	---	--

PART 2 : PURPOSE OF THE REPORT

Purpose for which this report is required: Test and inspect the fixed wiring installation within the property to ensure safety for continued use, as required by the Client (as required by Clause 1.3.2 of BS 7671:2018) and existing change of occupancy.

Date when inspection and testing was carried out: 07/01/2026

Records available for ()
Records available for ()
Records available for ()
Previous reports date: Nil

PART 3 : SUMMARY OF THE CONDITION OF THE INSTALLATION

General condition of the installation for safety of electrical safety: Satisfactory in accordance with the current edition of BS 7671 with the exception of any items mentioned in observations listed in table 1.

Has continued use of the installation been confirmed? Yes No

Estimated age of electrical installation: () years. Evidence of alterations or additions: () years. Overall assessment of the installation for continued use: **Satisfactory**

PART 4 : DECLARATION

INSPECTION AND TESTING

I/We, being the person responsible for the inspection and testing of the electrical installation, declare that the installation is in compliance with the current edition of BS 7671 with the exception of any items mentioned in observations listed in table 1.

Name (legible) on behalf of the contractor identified in PART 1: HARRY THOMAS

REVIEWED BY THE REGISTERED QUALIFIED SUPERVISOR FOR THE CONTRACTOR

Name (legible) on behalf of the contractor identified in PART 1: CHRIS NAYEN

This report is based on the model form shown in Appendix 8 of BS 7671:2018 (as amended). Date of issue: 07/01/2026. Where applicable, please see the 'Notes for Recipients'.

- 5) Portable heaters are not allowed in any common parts of the premises.
- 6) As per tenancy agreements, flammable liquids or gas cylinders should not be stored on site.

- 7) Gas appliances and pipework (where installed) are subject to annual testing and certification. This cyclical contract is managed by the in-house Gas Team. The gas is supplied internally.

**Section
15**

Waste Control

1. There is a regular Cleaning Service to the premises.
2. The block has a Refuse chute on all floors other than the ground floor and are emptied on a regular basis.



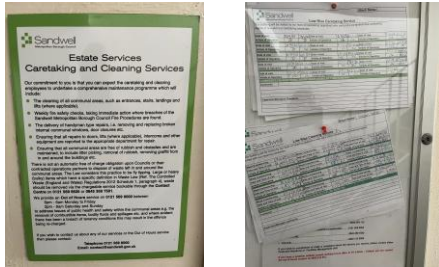
3. The dedicated bin store is located by the side entrance on the ground floor.



4. The bin store has a manual close plate; this does work but an email has been sent to the fire safety manager to add it to the maintenance programme.



5. Regular checks by Caretakers minimise risk of waste accumulation.



6. Sandwell Council 'Out of Hours' service is in place to remove bulk items.
-

**Section
16**

Control and Supervision of Contractors and Visitors

1. Responsive Repairs service delivered by Sandwell MBC necessitates the production of an order via the computerised repairs system. Details of any known risks are documented on the repair order.
 2. Hot works are not permitted unless authorisation is given via the approved officer. The hot works procedure is to be followed.
 3. Utility companies are not allowed to access any service cupboard or secure area. They must request and collect maintenance keys from the local housing office. This allows scrutiny of what is the scope of any works such as installation of tenant's broadband / phone line etc.
 4. Where contractors are appointed to undertake major refurbishment works, Sandwell MBC Urban Design team will put control measures in place. Such Measures include: -
 - a) Pre-Contract Meetings – where contractor is made aware of all working arrangements and safe systems of work to be adopted. Issues covered in this meeting will include:
 - Health and Safety.
 - Site Security.
 - Safety of working and impact on children/school business.
 - Fire risk, if any.
 - Site Emergency Plan.
 - b) Monthly Site Meetings – in order to monitor, review and share any new information including any new risks.
 - c) Site monitored daily whilst work is in progress by Clerk of Works / Health and Safety Officers.
 - d) Final Contractor review on completion of works undertaken.
-

**Section
17**

Arson Prevention

1. Regular checks are undertaken by Caretakers / Cleaning Team(s) 365 days per year which helps reduce the risk of arson.
2. Restricted access to the premises by use of a door entry system.



3. No CCTV is present at the block.
4. There is no current evidence of arson.
5. The perimeter of the premises is well illuminated.



6. There have been no reported fire incidents at this premise since the last fire risk assessment.
-

**Section
18**

Storage Arrangements

1. Residents instructed not to bring L.P.G cylinders into block.
2. The tenancy conditions, Section 7 – Condition 5.6 stipulates “If you live in a flat or maisonette, you, people living with you and any visitors to your property must not keep or use paraffin oil, petrol, bottled gas appliances or any other explosive, FLAMMABLE or dangerous material in the property. This restriction also applies to any storage facility situated in or attached to the block, which has been provided for your use.”
3. No Flammable liquids stored on site by Caretakers / cleaners.
4. There are no flammable liquids or gas cylinders stored on site.
5. There are external storage cupboards with timber doors, used by the tenants that are kept locked, these was not accessed at the time of the FRA.



**Section
19**

**Additional Control Measures.
Fire Risk Assessment - Action Plan**

Significant Findings

Action Plan

It is considered that the following recommendations should be implemented to reduce fire risk to, or maintain it at, the following level:

Trivial Tolerable

Definition of priorities (where applicable):

P1 Arrange and complete as urgent – Within 10 days

P2 Arrange and complete within 1-3 Months of assessment date

P3 Arrange and complete within 3-6 Months of assessment date

P4 Arrange and complete exceeding 6 months under programmed work



Fire Risk Assessment Action Plan



Name of Premises or Location:

Falcon Place 13-18

Date of Action Plan:

22/05/2026

Review Date:

<Insert date>

Question/ Ref No	Required Action	Supporting photograph	Priority	Timescale and Person Responsible	Date Completed
9/4	The emergency light outside no7 on the second-floor landing was not working this requires repair.	N/A	P2 3-6 Months	Electrical 1-3 Months	



Fire Risk Assessment

Observations

When undertaking future improvement program(s), it is advised that the observations listed below should be given consideration (noting that the safety of the residents is not jeopardised by these, and all steps to reduce any known risks have been taken).

As the refuse hoppers are located within a common area, it is recommended that the manual bin chute be upgraded to a fusible link to ensure it will automatically close in the event of a fire, thereby reducing the risk of fire and smoke spread.

Signed

	Fire Risk Assessor	Date: 22/05/2026
	Team Lead Fire Safety	Date: 22/05/2026

Significant Hazards on Site and Information to be Provided for the Fire Service


Name of property: Falcon Place 13-18

Updated: 26/03/2025


Premise Manager: Prabha Patel

Tel. No.: 0121 569 2975

Hazard	Location	Information/Comments
An asbestos survey has been undertaken and is held by S.M.B.C. Investment Division (Tel:- 0121 569 5077).		

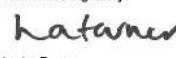


Report No.: J412727
Nature of Work: Management Survey
Issue Date: 25/03/2025
Client Name: Sandwell MBC (formerly Homes) Building Services, Direct 2 Trading Estate, Roway Lane, Oldbury, West Midlands, B69 3ES
UPRN: BL17436FA02 2
Site Address: Falcon Place 13-18 (O&E), Oldbury, B69 1PD





Order Placed By: Dean Harding
Site Contact: Communal
Date(s) of Work: 08/03/2025
Technical Manager: D Ely CCP (Asbestos)
Assistant Surveyor(s): Not Applicable
Lead Surveyor: Anton Rickards
Authorised Signatory: Louise Farmer


 Anton Rickards
 Asbestos Surveyor


 Louise Farmer
 Technical Review Officer and Asbestos Consultant
 25/03/2025

Non-accredited activities are present within this report.

Head Office:
25 Stourbridge Road,
Bilston, West Midlands
B63 3US
Tel: 0121 550 0234
Email: admin@bradley-environmental.co.uk

Registered Office: Bradley Environmental Consultants Limited, 25 Stourbridge Road, Bilston, West Midlands, B63 3US. Registered in England No. 20179701
Management Survey (with MA - LOD) Template Version 56

Page 1 of 38

Fire Risk Assessment

ABOUT THE REPORT – PLEASE READ

All Survey Methodology is based upon HSE document HSG 254 - Asbestos: The Survey Guide. All surveyors are experienced British Occupational Hygiene Society (BOHS) P402 qualified surveyors with extensive Surveying & Refurbishment Project experience specific to Sandwell MBC's managed housing stock.

The person or persons using this report to programme refurbishment work on site are assumed to be competent & experienced in the field of domestic refurbishment projects & have suitable & sufficient asbestos awareness to understand the scope of this report & apply it to the project. All trade operatives working on site are also expected to have relevant asbestos awareness training & experience. IF IN DOUBT STOP & ASK! Please ensure the report covers the areas that you need to work on.

SHAPE: Sandwell MBC's Integrated ICT solution holds the Company Asbestos Register. The Asbestos Register is interrogated when completing the asbestos survey report to ensure that ACM's in similar properties are considered where relevant. The Register holds details of all suspected or confirmed ACM's identified during Refurbishment & Demolition programmes as well as Repairs activities for the past 11 years. If potential ACM's have been identified within difficult to survey areas such as Cavity Walls, Floor Voids etc these will be highlighted within the report. The Interrogation of the Company Asbestos Register compliments the survey & report process it does not substitute the Refurbishment & Demolition Survey.

Void Properties – The Building Surveying team who undertake Refurbishment & Demolition Asbestos Surveys also undertake Domestic Energy Assessment Surveys, Boroscope Surveys for Thermal Insulation & Fire Integrity Assessments to a representative percentage of the void turn over.

Site Overview Page 2 – This section is included to aid surveying & to ensure comprehensive survey information is detailed.

Term	Explanation	Term	Explanation
Property Address	Specific Property to which survey relates.	Photo's	These will usually be provided for the front elevation of the property to aid identification.
Surveyed by	Relates to P402 trained surveyor.	Sampled by	P402 trained surveyor.
Action taken on Project	Record what action may have been undertaken to the Asbestos in question. E.g. Nothing, Repair, replace, Manage.	Checked by	P402 trained surveyor who checks report prior to issuing.
Type of Work to be undertaken	Relates to the envisaged type of work that the Asbestos Survey Report will be used to aid. This assists the asbestos surveyor to guide his survey methodology & will help the users of this report decide if it is suitable for the work activity being undertaken.	Survey Report Type	Report type is determined by the type of work to be undertaken. The reader of this report must satisfy themselves that the scope of the survey is sufficient for the purpose of work being undertaken.
ACM	Asbestos Containing Material.	Refurbishment Survey	HSG 254 – Refurbishment & Demolition Survey. Surveying undertaken to all parts of the property presuming full decent homes refurbishment, which may include, New Kitchen, New Bathroom, Electrical Rewire, Re-roof, Full Heating System. Taking account of the complete structure of the property & archetype information available. This survey has been carried out without detailed knowledge of the works to be undertaken during refurbishment. Anyone using this report to support building works being undertaken to the property should ensure that the report is sufficient for the purposes of the building work being undertaken. The reader should be confident that the areas that are to be disturbed by the proposed work are included.
HSE Notify	This highlights if a material normally requires notification to the Health & Safety Executive prior to removal. GUIDANCE ONLY.	Management Survey	A management survey is the standard survey. Its purpose is to locate, as far as reasonably practicable, the presence and extent of any suspect ACMs in the building which could be damaged or disturbed during normal occupancy, including foreseeable maintenance and installation, and to assess their condition.
Bulk Sample	Sample of potential ACM that is representative of the whole.	Refurb & Management Survey	Both Survey Report Types are ticked: due to works identified at survey stage the surveyor has completed Refurbishment Survey for the works required & may have undertaken a management survey on remaining areas of the property. The report should not be used for works outside the scope stated, unless the reader assures themselves that it is suitable & sufficient.
Request Sample	The item described has not been tested for Asbestos content. The item must be presumed to contain asbestos until sampling confirms. If work is going to be undertaken in this area sample should be requested prior to work starting.	Cavity Walls / Floor Voids or similar.	Will be assessed at survey stage & desktop assessment of similar archetypes.
Awaiting Results	If no results have been detailed then you must not work on these items until you receive further confirmation.	Photo's	Where practical & to aid the identification of ambiguous material locations photos will be included within the report to ensure that materials are identified on-site correctly. Photos will be annotated where necessary.
Extent	An estimate of quantity will be given where possible to aid work planning & valuation.		
Labels	Materials will be labelled where practical. Labelling will not be undertaken to low risk materials e.g. floor tiles, Textured Coatings etc or where labelling could easily be removed or would cause potential exposure if removed. All presumed ACM's will be labelled as "Asbestos" where practical. All sampled materials will be labelled with an "Asbestos Sampled" label.		