

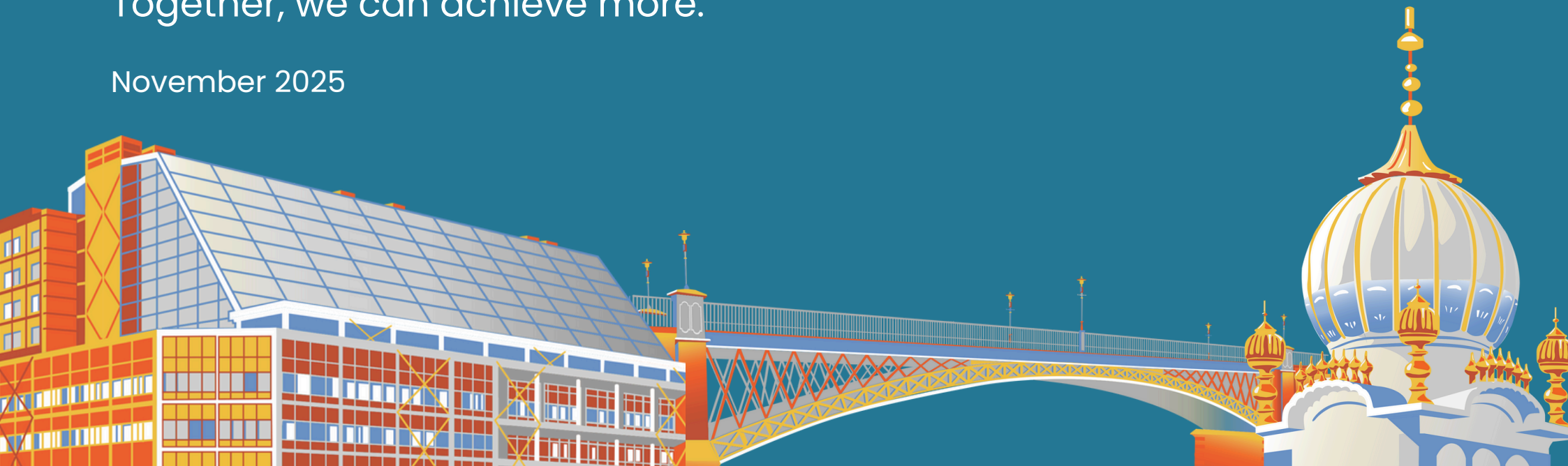
# SMETHWICK

## PLAN FOR NEIGHBOURHOODS

### 10-YEAR REGENERATION PLAN QUICK GUIDE

Together, we can achieve more.

November 2025



# Our vision

## Smethwick 2036

### A connected, thriving community

“In 10 years, Smethwick is a vibrant, inclusive town powered by opportunity, innovation and community pride.

With thriving high streets, modern transport, green spaces, and world-class learning and job opportunities, it's a place where people of all ages and backgrounds can live, grow and belong.”

*Smethwick Plan for Neighbourhoods Vision Statement*

# Introduction

## What is this plan about?

The 10-Year Regeneration Plan explains how Smethwick will improve over the next 10 years. It is about making our town a better place to live, work and feel safe.

## Why do we need this plan?

Smethwick communities told us:



**Some streets and neighbourhoods feel unsafe**



**High streets need improving**



**Health is a major concern**



**Young people need more chances**



**Communities want to feel stronger and more united**

## Who helped make this plan?

Local people, community groups, schools, organisations, and public services helped shape this plan. Your voice is important and will guide what happens next.

# What will change in Smethwick?

## **Better high streets and places.** This could mean...

- Cleaner, brighter and safer streets
- Better lighting and pavements
- Improvements to parks and green spaces
- Protecting important local buildings

## **Better health and wellbeing.** This could mean...

- More local health and wellbeing support
- Activities to help people stay active
- Improvements to parks, sports and community spaces

## **Safer neighbourhoods.** This could mean...

- Working with police and communities
- More lighting, CCTV and safer walking routes
- Projects for young people to prevent problems early

## **More chances for children, young people and adults.** This could mean...

- Better youth services
- New places to learn skills
- More help to get jobs and training
- Support for families

As well as **better transport connectivity** and **housing upgrades** that improve energy efficiency.



## What makes Smethwick special?

- Smethwick is diverse and proud
- Over half of us come from different backgrounds and cultures
- Our community spirit is our biggest strength



## How decisions are made

- Local people identify priorities and share ideas
- The Smethwick Partnership Board listens and helps choose projects – many projects will be delivered by local community groups
- Sandwell Council makes sure money is spent properly and in accordance with the rules set by Government.

## How can you get involved?

Over the next 10 years, we will hold:

- Community workshops
- Online updates
- Events with schools, faith groups and community organisations



## Our promise

We will:

- Listen to local people
- Share updates clearly
- Work together to make Smethwick safer, stronger and fairer

## Together, we can achieve more.

This is a quick guide of the 10-Year Regeneration Plan for Smethwick.

The full Plan, submitted to Government in November 2025, and a summary version are both available to view [here](#).



Funded by  
UK Government

